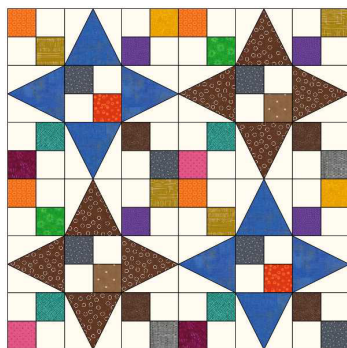
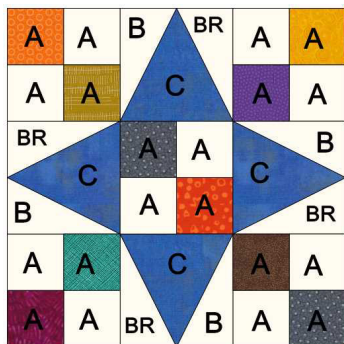


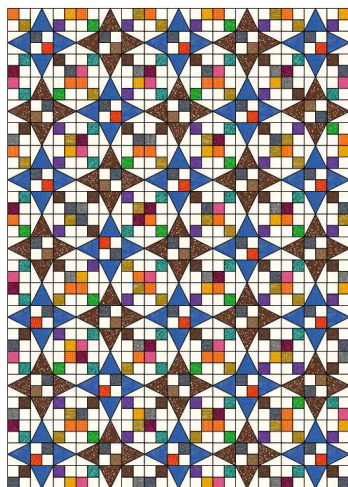
## Block of the Day 2023

### 0728 Scrapy Star Patch 12"

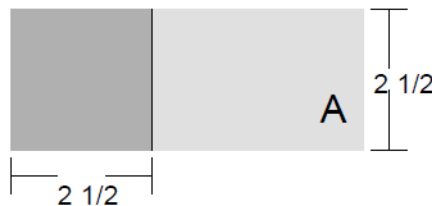
Click or Scan code to see video





4 Blocks



35 Blocks



 10 assorted patched

 10 assorted patches

#### AccuQuilt

Use 2-1/2" strip cutter for strip piecing.

For patches - 55059, 55709 or 55018  
or 8" Qube Shape 2


#### For Strip Piecing:

1 strip @ 2-1/2" x WOF will  
give 16 patches.

#### 4" Fin Triangle in Square. Use Tri Recs Tool Set

#### B and BR - Use Recs Ruler

Cut 1 @ 4-1/2" x 15"  
Fold strip in half, wrong  
sides together.

 Cut 4 sets

#### C - Use Tri Ruler

Cut 1 strip @ 4-1/2" x 15"

 4 patches

#### AccuQuilt

55409 or 8" Qube Comp Set Angles: Sides Shape 14, Center Shape 13

1. Using Patch A patches or strips, make  
5 scrapy four-patch units.



2. Using the B, BR and C patches, make  
4 identical triangle in square units.



3. Refer to diagram to assemble block.

#### To make the scrapy 60" x 84" sample quilt shown:

#### Four-Patch Units – 175

- Light fabric – 22 strips @ 2-1/2" x WOF
- Dark fabric – 22 strips @ 2-1/2" x WOF

#### Triangle in Square Units – 140

- Light fabric (rectangles) - Total of 18 strips @ 4-1/2" x 34"
- Dark fabric (triangle) – Total of 18 strips @ 4-1/2" x 34"