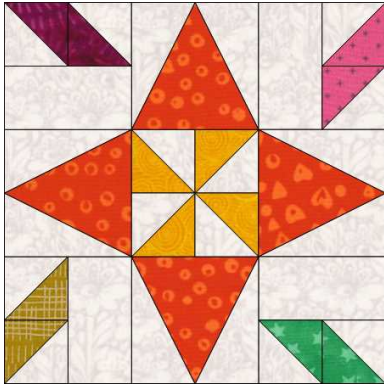


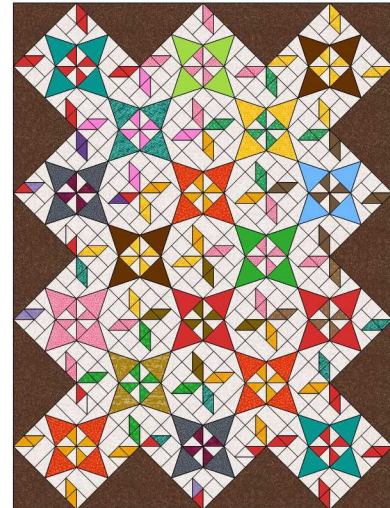
Block Of The Day 2023

0102 Carnival Block

Finished size 12"

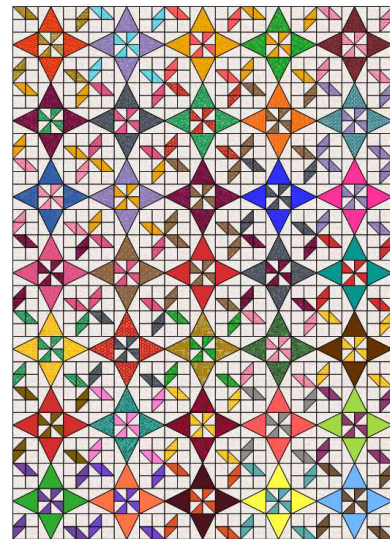
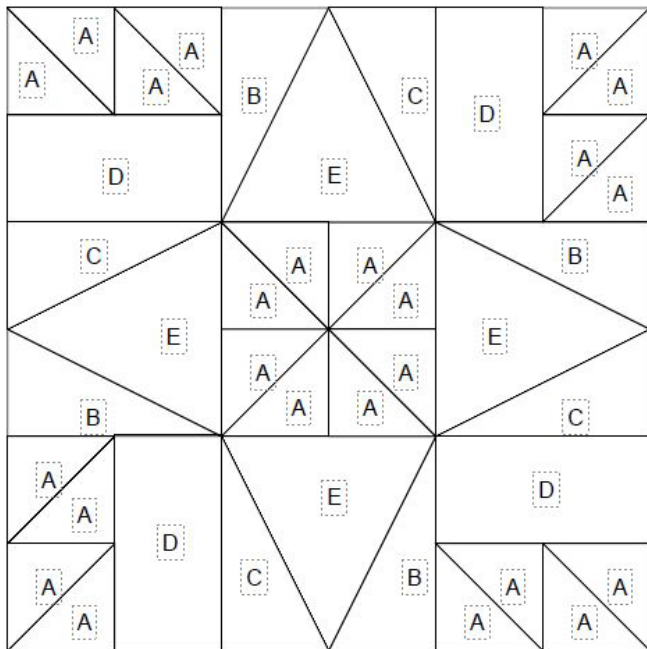


Scrappy Quilt Examples



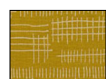
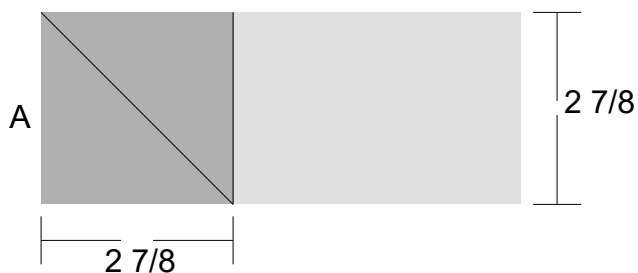
Diagonal set 18 blocks

Finished size approx. 50" x 68"



Blocks set 5 x 7

Finished size approx. 60" x 84"



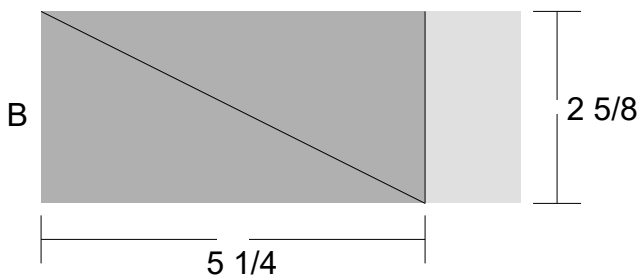
12 patches



12 patches

AccuQuilt Dies - 2" Finished Half Square Triangle

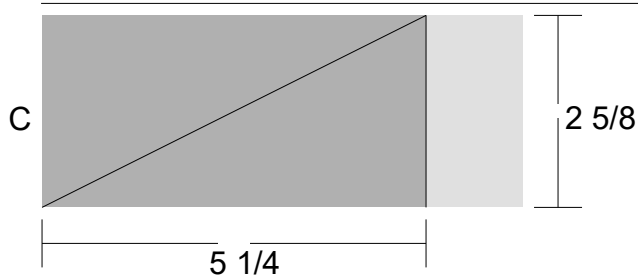
- GO! Qube Mix & Match 8" (55776)
- GO! Half Square Triangle (55063 or 55712)



4 patches

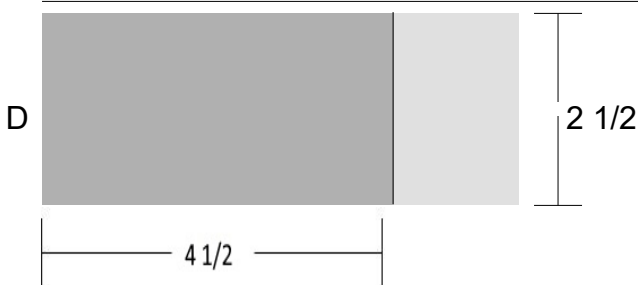
AccuQuilt Dies - Triangle in Square Sides

- GO! Triangle in Square 4" Finished Square (55409)
- GO! Qube 8" Companion Set-Angles (55789)
- GO! Triangle in Square-Sides 4" Finished Square (55754)



4 patches

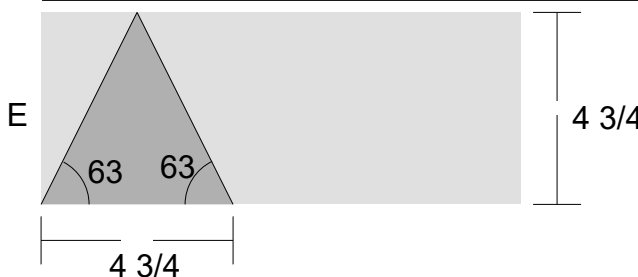
AccuQuilt Dies - same as above



4 patches

AccuQuilt Dies - 2" x 4" Finished Rectangle

- GO! Qube Mix&Match 8" (55776)
- GO! Rectangle 2" x 4" Finished (55159 or 55715)



4 patches

AccuQuilt Dies - Triangle in Square Center Triangle

- GO! Triangle in Square 4" Finished Square (55409)
- GO! Qube 8" Companion Set-Angles (55789)
- GO! Triangle in Square-Center 4" Finished Square (55753)

Approximate Yardage (yds) for 12 Blocks

Assorted light background fabrics	4.0
Assorted dark fabrics for star points	1.5
Assorted medium fabrics for pinwheels	1.5
Binding	5/8

Recommended Rotary Cutting Tools:

- Creative Grid Stripology Ruler
- For Patches B, C and E the Tri-Recs Tool Set by Wrights

Copyright (c) 2022 by Carol A Thelen

May be copied for PERSONAL or CHARITABLE USE ONLY. May NOT be sold.